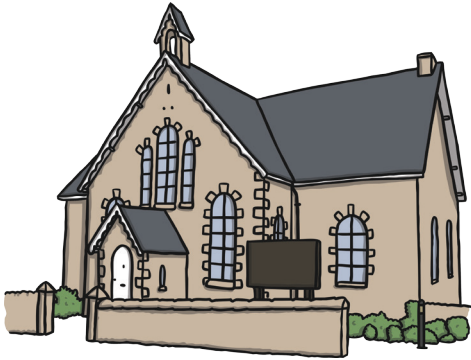


pre-

Prefixes

e.g. preschool



before

over-

Prefixes

e.g. overexcited

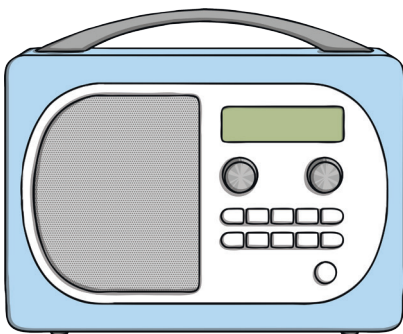


**too much,
excessive**

re-

Prefixes

e.g. replay

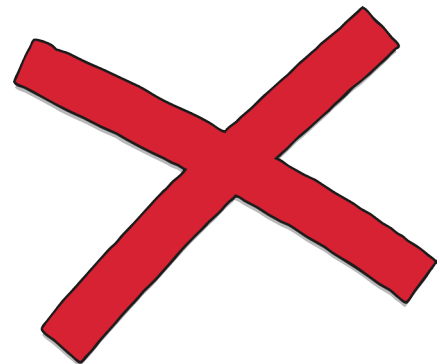


again

mis-

Prefixes

e.g. mistake



wrong

dis-

Prefixes

e.g. dislike



not, no

un-

Prefixes

e.g. unhappy



not

non-

Prefixes

e.g. nonverbal



no, not

bi-

Prefixes

e.g. bicycle

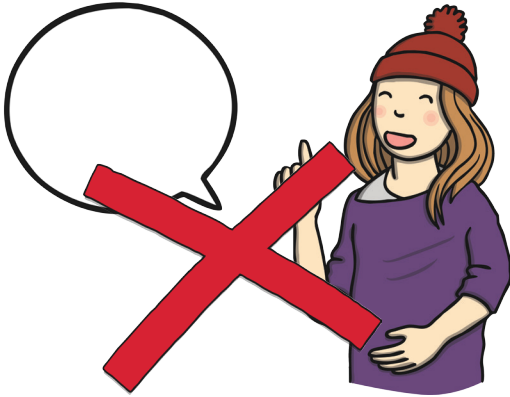


two

ex-

Prefixes

e.g. excommunication



out of

com-

Prefixes

e.g. composition

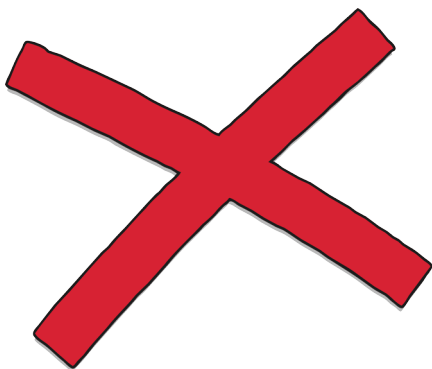


**with,
together**

in-

Prefixes

e.g. incorrect

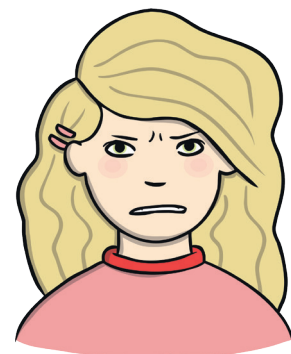


no, not, non

im-

Prefixes

e.g. impatient



no, not, non

con-

Prefixes

e.g. conform



**with,
together**

pro-

Prefixes

e.g. pronoun

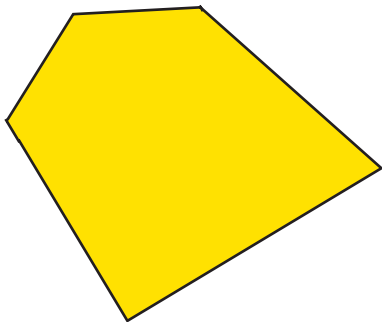
**he she
it me
them**

**in support of,
acting for**

ir-

Prefixes

e.g. irregular



not

il-

Prefixes

e.g. illegible

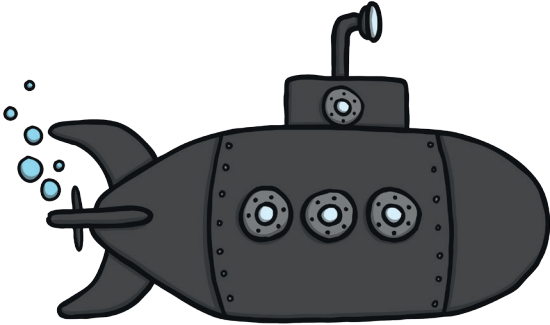


not

sub-

Prefixes

e.g. submarine



below, under

inter-

Prefixes

e.g. intergalactic

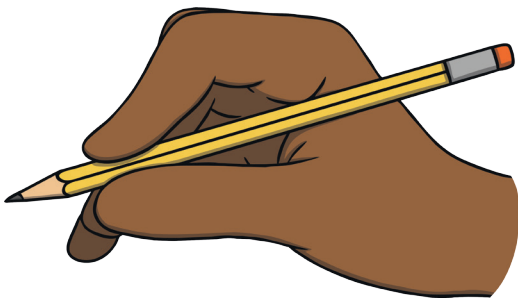


between

auto-

Prefixes

e.g. autograph

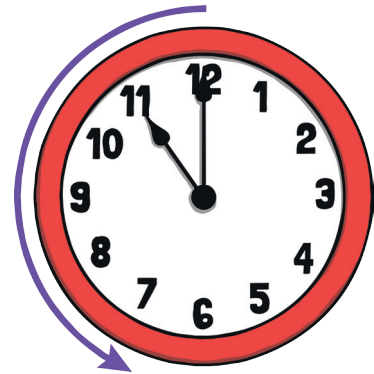


self

anti-

Prefixes

e.g. anticlockwise

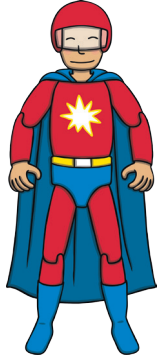


against

super-

Prefixes

e.g. **superhuman**



**above,
beyond**

-ment

Suffixes

e.g. **movement**

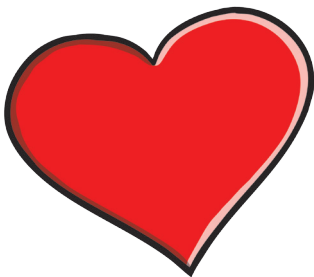


the action of

-able

Suffixes

e.g. **adorable**

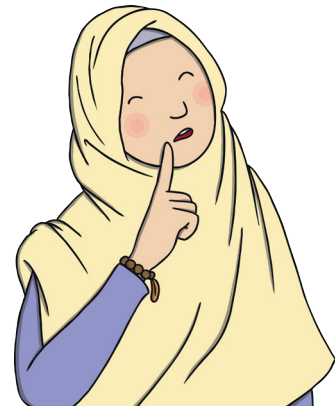


can be

-ion

Suffixes

e.g. **concentration**



the result of

-ly

Suffixes

e.g. lovely



**tells how
something is
done**

-less

Suffixes

e.g. flawless



without

-ful

Suffixes

e.g. painful



filled with

-ed

Suffixes

e.g. jumped



past tense

-ing

Suffixes

e.g. jumping



**present
tense**

-s & -es

Suffixes

e.g. flowers



plural

-ous

Suffixes

e.g. nervous

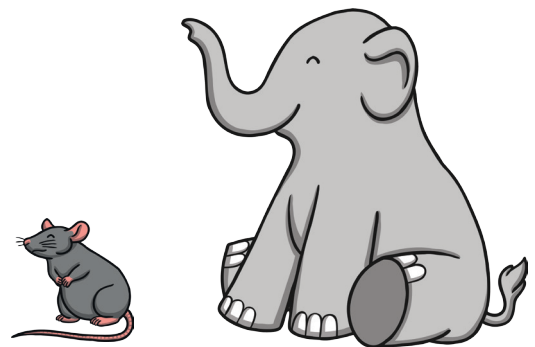


full of

-er

Suffixes

e.g. bigger

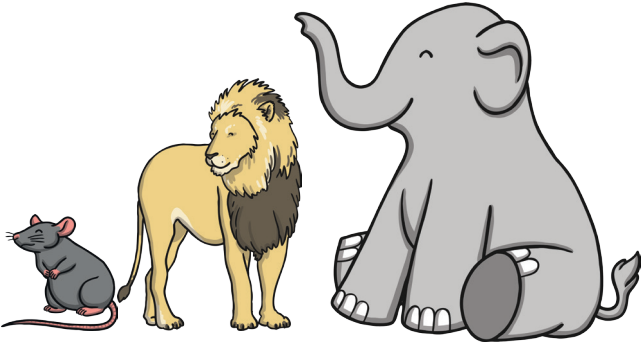


**comparative
“more than”**

-est

Suffixes

e.g. biggest



**comparative
“the most”**

-ness

Suffixes

e.g. sadness



**the state of
something**

-ist

Suffixes

e.g. cyclist

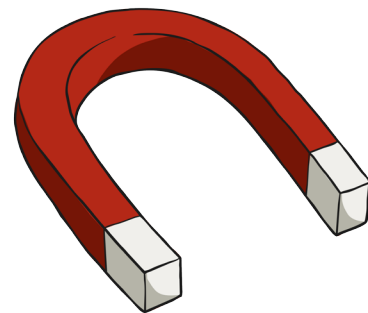


**involved in
activity or field**

-ic

Suffixes

e.g. magnetic



**describes
certain trait**

-en

Suffixes

e.g. woollen

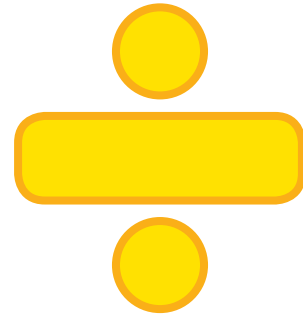


**“to become”,
“made of”**

-tion & -sion

Suffixes

e.g. division



**making an
abstract noun**